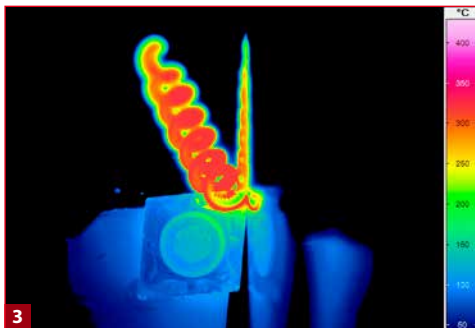
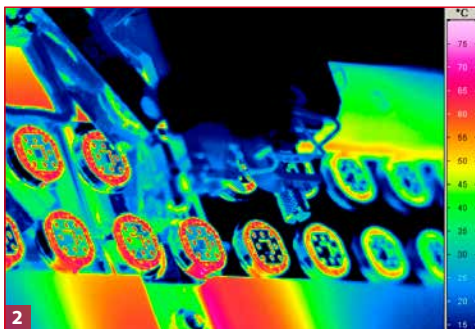


ImageR[®] 8300 hp

High-speed Thermography

InfraTec

Europe's leading specialist for infrared sensors and measurement technology



- 1) ImageR[®] 8300 hp with interchangeable lenses from InfraTec
- 2) Bonding of sensors
- 3) Machining with a tool bit

Cooled FPA photon detector with (640 × 512) IR pixels
Full-frame rate up to 350 Hz, GigE Vision interface
Snapshot detector, internal trigger interface
Extremely short integration times in the microsecond range
Pixel resolution up to 2 μm
Thermal resolution better than 0.02 K
Made in Germany



www.InfraTec.eu

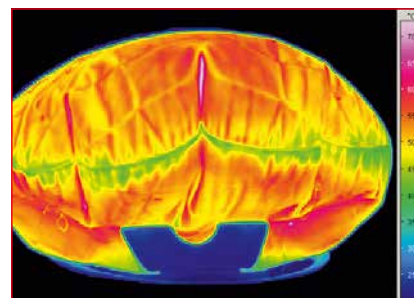
NEW



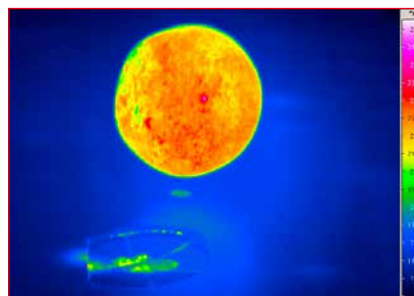
Latest information on the internet.

Spectral range	(2.0 ... 5.5) μm
Pitch	15 μm
Detector	InSb
Detector format (IR pixels)	(640 \times 512)
Selection Mode	ITR/IWR
Detector cooling	Stirling cooler
Temperature measuring range	(-40 ... 1,500) $^{\circ}\text{C}$, up to 2,000 $^{\circ}\text{C}^*$
Measurement accuracy	$\pm 1^{\circ}\text{C}$ or $\pm 1\%$
Temperature resolution @ 30 $^{\circ}\text{C}$	Better than 0.02 K
Frame rate (full screen/half screen/ quarter screen mode/sub-frame)*	Up to 350 Hz / 670 Hz / 1,200 Hz / 5,000 Hz
Window mode	Yes
Focus	Manually, motorised or automatically*
Dynamic range	14 bit
Integration time	(0.6 ... 20,000) μs
Rotating filter wheel*	Up to 5 positions
Rotating aperture wheel*	Up to 5 positions
Multi integration time*	Yes
Interfaces	2 \times CAMLink*, USB, HDMI*
Trigger	2 IN / 2 OUT, TTL
Tripod adapter	1/4 " and 3/8 " photo thread, 2 \times M5
Storage and operation temperature	(-40 ... 70) $^{\circ}\text{C}$, (-20 ... 50) $^{\circ}\text{C}$
Protection degree	IP54, IEC 529
Dimensions, weight	(250 \times 120 \times 160) mm, 3.3 kg

* Depending on model



Airbag test



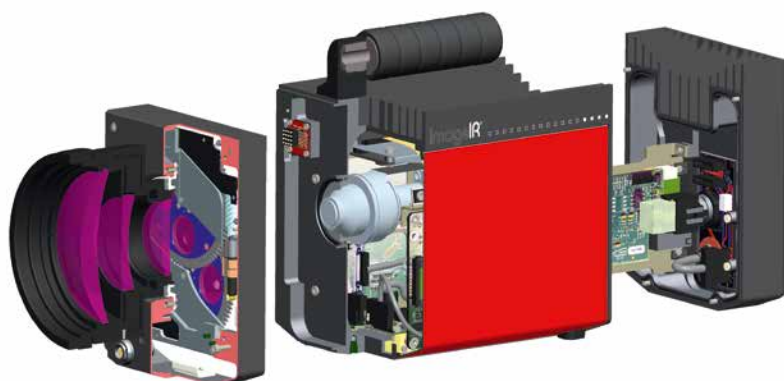
Impact of a steel ball

With its ImagerIR® 8300 hp, InfraTec introduces another top level thermographic camera model belonging to the ImagerIR® high-end camera series. The implementation of a **digitally-interfaced (640 \times 512) pixel MWIR detector** now allows **350 Hz full-frame** real-time imaging without sacrificing any thermal accuracy.

Like all camera models of this series ImagerIR® 8300 hp and its cooled focal-plane-array photon detector reach an outstanding **thermal resolution better than 0.02 K (20 mK)**. The new version was developed for most demanding operations in research and development and process monitoring fields. Its **modular structure consisting of the optical-, detector- and interface section**, makes the camera easily compatible to the related applications and for tailored configurations.

An **integrated trigger** interface guarantees a repeatable high-precision triggering of quick procedures. **Two configurable digital in- and outputs** serve as control ports for the camera or as generator of digital control signals for external devices.

The optical channel consists of the **exchangeable infrared lens** as well as application-specific apertures, filters and optical elements. All exchangeable ImagerIR® standard lenses can be **equipped with a motorised focus** unit easily operable from the camera's application software. It allows for **precise, fast and remotely controlled motorised focusing** and is part of the autofocus function.



Modular system design of ImagerIR®-Series

InfraTec GmbH
Infrarotsensorik und Messtechnik

Gostritzer Straße 61 - 63
01217 Dresden / GERMANY
Phone: +49 351 871-8630
Fax: +49 351 871-8727
E-mail: thermo@InfraTec.de

© InfraTec 09/2014 (All stated product names and trademarks remain in property of their respective owners.)

Further information at: www.InfraTec.eu